

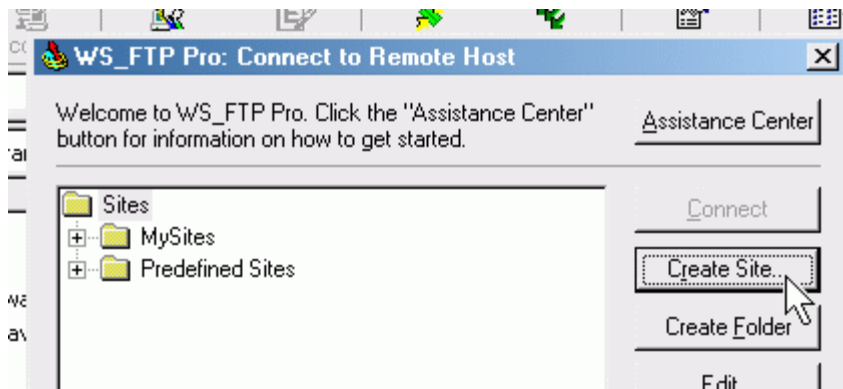
## Uploading with WSFTP

To get your website 'out there' on the Internet, you will need to somehow get your website's files on the **webserver** provided by your **web host**. In this guide we're assuming you have already found a web host and received your account information.

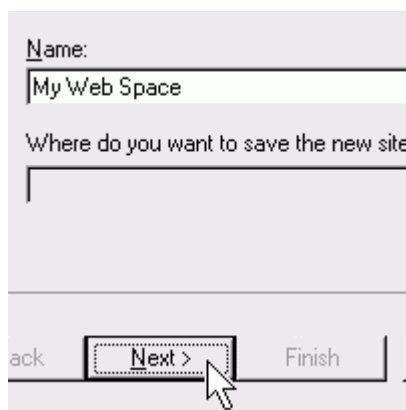
**FTP** (file transfer protocol) is the means by which most people will upload their files. To use FTP, you will need a **FTP client**. In this guide we're going to show you how to use a particular FTP client, **WSFTP**, to upload your website's files to your webserver. If you don't have WSFTP yet, you can download it from [here](#).

Once you've downloaded and installed WSFTP, start the application. The first thing you'll need to do is add an entry for your web space to WSFTP. This just makes it to where you can click to connect to your web space instead of entering in all of the connection information each time. To do this:

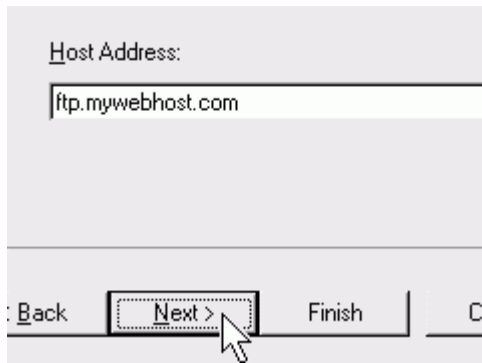
1. Click on **Create Site...**



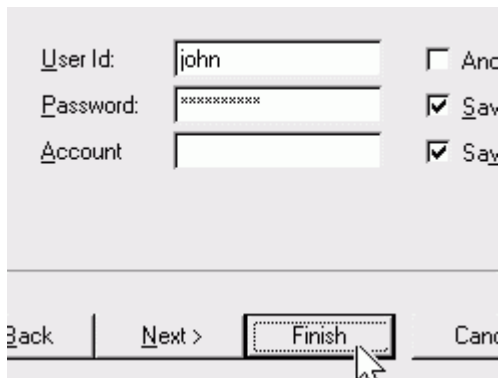
2. Enter the name for your web space and click **Next**



3. Enter the host address (provided by your web host, eg. ftp.mywebhost.com) and click **Next**.

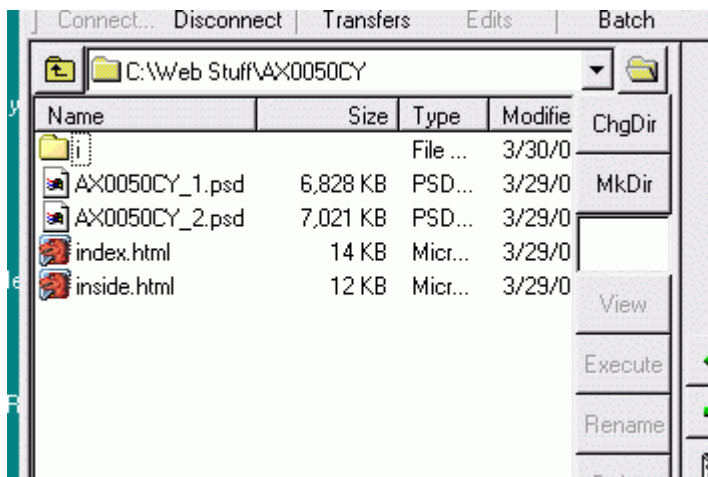


4. Enter your account user ID and password. Leave the Account field blank and click **Finish**.

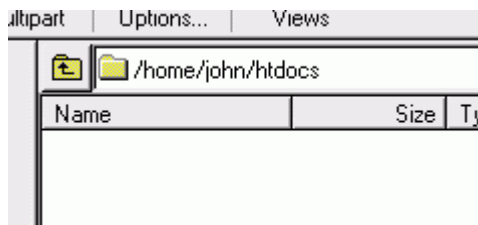


You'll now see a brand new entry for your web space in the list. You only have to go through the above process once to add your web space. Now you're ready to upload your website to your web space:

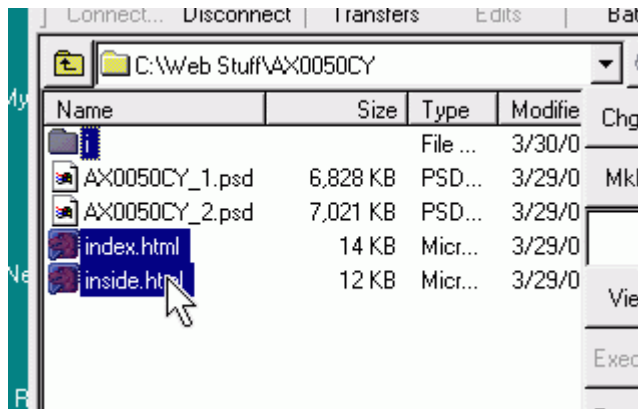
1. Double click on the entry for your web space
2. Once you are connected, navigate in the left pane (your computer) to the folder where your website's files are stored on your computer.



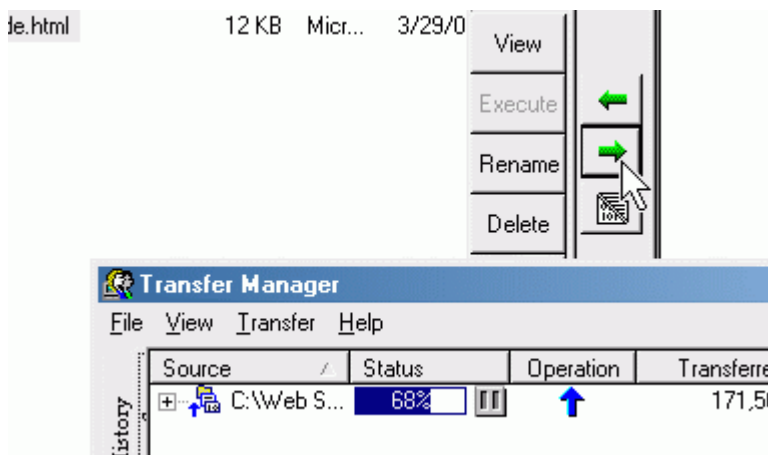
3. In the right pane (the web server), navigate to the folder where you are supposed to store your website files. Usually it's a folder named 'htdocs' or 'html', but you'll need to ask your ISP for this information as it varies. In this example, the folder is called 'htdocs'.



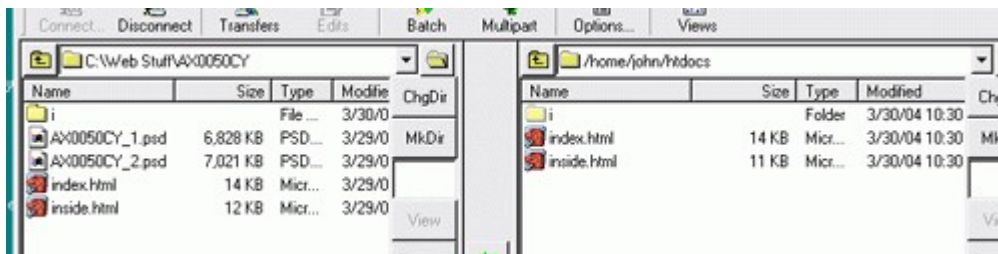
4. In the left pane, select all files and folders EXCEPT the PSD files -- these are not necessary to upload.



5. Click on the green arrow pointing right. This will start the upload.



And you're done! Notice the files and folders for your website were uploaded from your computer (the left pane) to the web server (the right pane).



You can now access your website at the address given to you by your web host. If you ever need to update your website, just repeat the above steps once you've made your changes to the copy of the site on your computer.

And that's the end of this WSFTP guide. If you need more help, be sure to check out our [other guides](#), our [frequently asked questions](#), or feel free to [contact us](#).