

Changing the Colours of a Template

- [Introduction](#)
- [Using Adobe Photoshop](#)
- [Using Paint Shop Pro](#)

Introduction

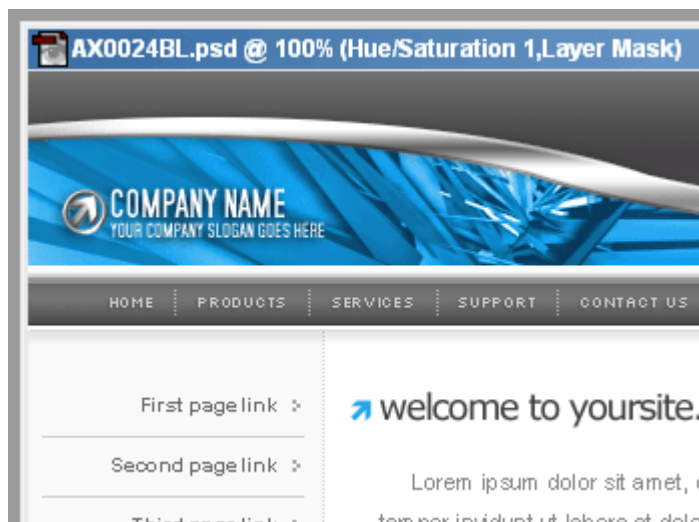
Let's say you find a template that only comes in red, green, or blue. You really like the design and layout, but you really need it in pink since that's the primary color used on your website. Instead of settling for one of those three available colors, you can purchase the template and use the instructions below to change it to the color you need (in this example, pink).

There are several ways to go about this, and the way you choose depends on what software you have available.

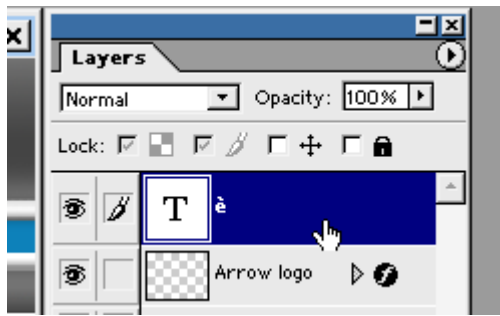
Using Adobe Photoshop

If you own or have access to a copy of Adobe Photoshop, you can change the color scheme of a template using the template's PSD files.

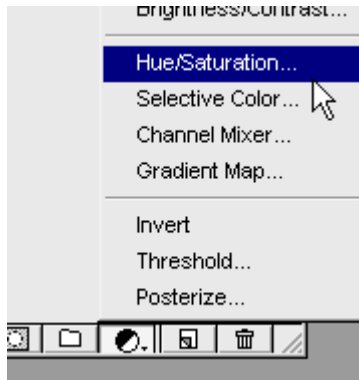
1. Open the template's PSD file in Adobe Photoshop. In this example, notice we are using the blue version of the template.



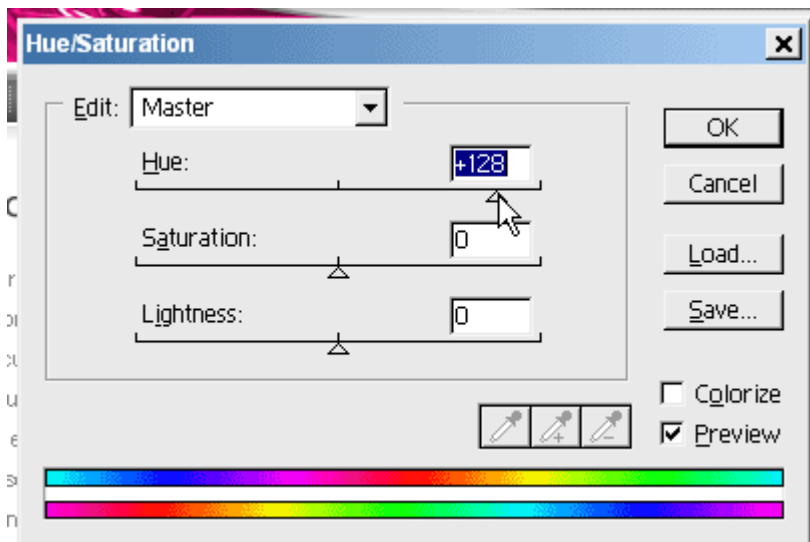
2. Select the first layer in the layer list.



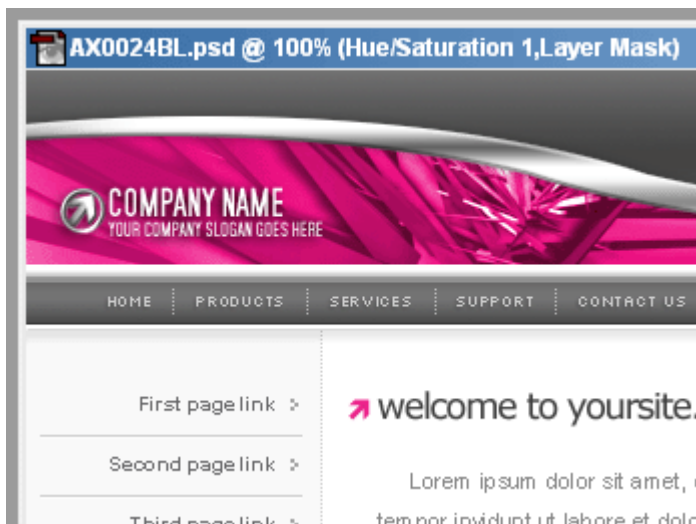
3. Click on the **New Adjustment Layer** button at the bottom of the layer list. A submenu will appear with a number of choices. Click **Hue/Saturation...**



4. A dialog like the one below will appear. There are three sliders that let you control the overall color of the template. **Hue** changes the actual shade of color, **saturation** changes the intensity of the colors, and **lightness** changes the brightness of the colors. Move the Hue slider around until the color of the template matches what you want. In this example, we want to make the blue part of the template pink to fit our color scheme. Once you find the desired color, click **OK**.



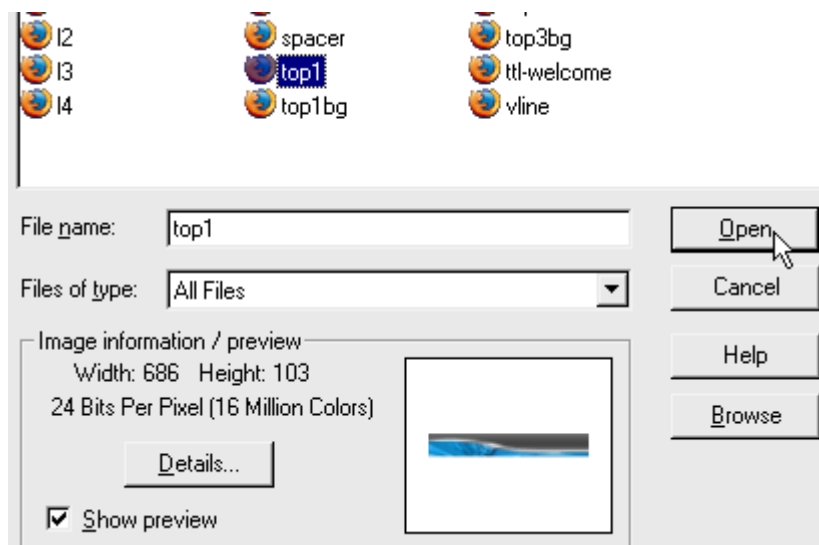
The color of the template has now been changed (as shown below). However, since you are working with the PSD file you will need to resave the PSD's slices to update the template's GIF/JPEG images. For instructions on how to do this, please refer to [this guide](#).



Using Paint Shop Pro

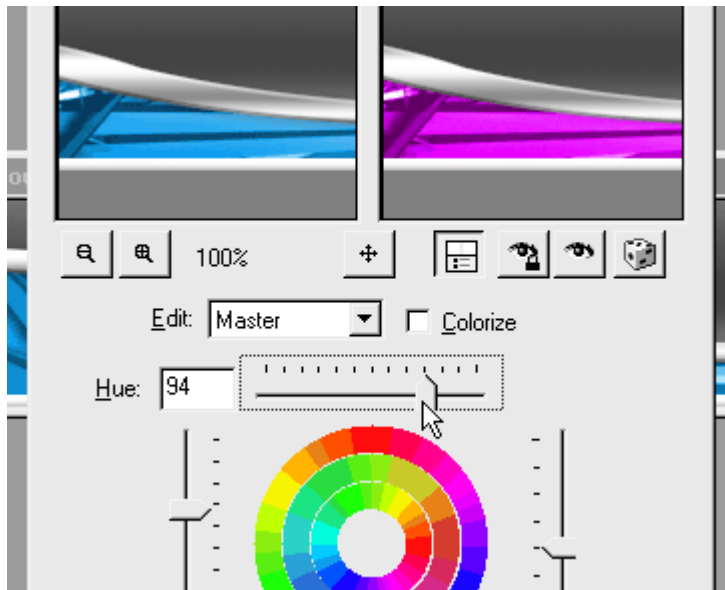
If you use Paint Shop Pro, you can change the color scheme of a template by changing the color of the individual GIF/JPEG images. However, since you'll probably not want to have to go through and change the color of each image manually, the instructions below show you how to use Paint Shop Pro's scripting ability to quickly change the colors of multiple images.

1. Open one of the template's JPEG or GIF image files. Pick one of the bigger ones that include several of the colors used in the template. In this example, we're picking the template's header image.

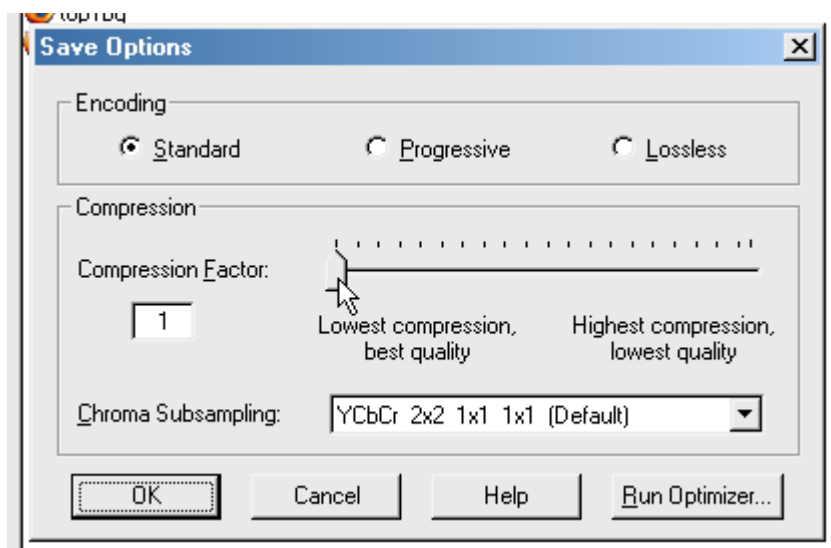


2. Next we need to tell Paint Shop Pro to record everything we do next so we can have it repeat it later for us automatically on the other images. Go to **File / Script / Start Recording**. Nothing will happen, but don't worry -- PSP is now recording your actions to a script.
3. Go to **Adjust / Hue and Saturation / Hue Saturation Lightness...**
4. A dialog like the one below will appear. There are three sliders that let you control the overall color of the template. **Hue** changes the actual shade of color, **saturation** changes the intensity of the colors, and **lightness** changes the brightness of the colors. Move the Hue slider around until the color of the template matches what you

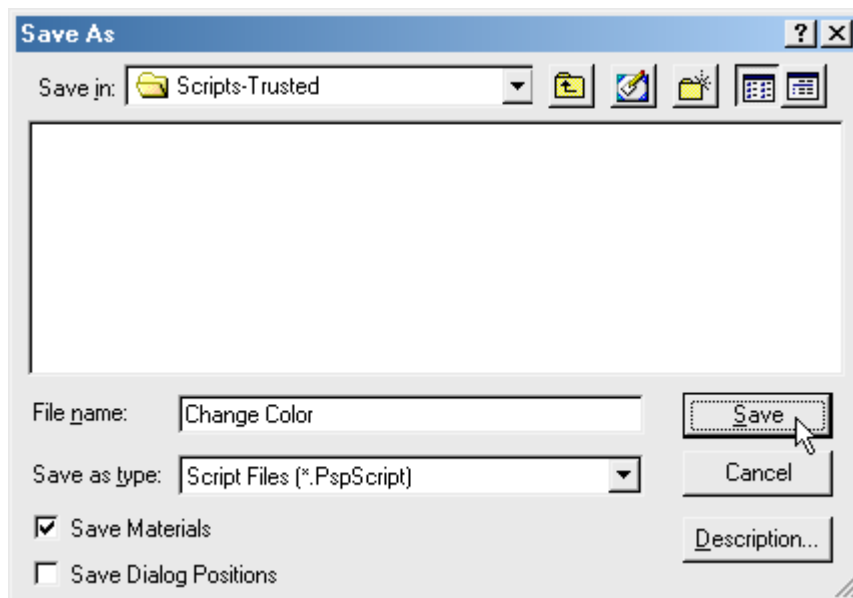
want. In this example, we want to make the blue part of the template pink to fit our color scheme. Once you find the desired color, click **OK**.



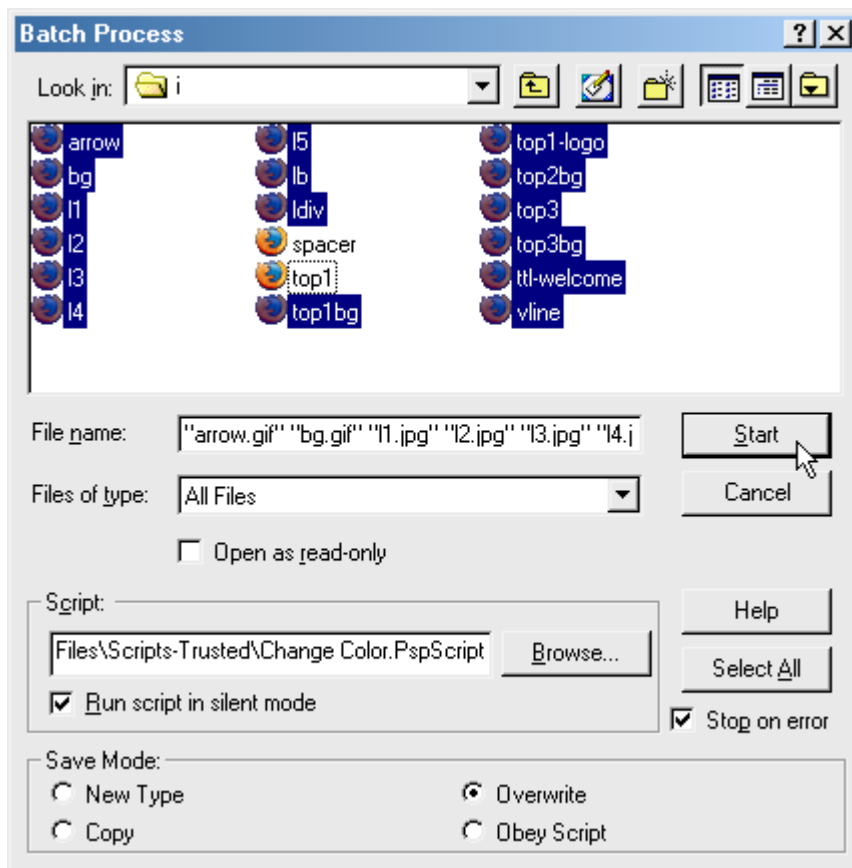
5. Go to **File / Save As...** If you are not working with a JPEG image, skip the next step. Otherwise. Click **Options...**
6. On the Save Options dialog, move **Compression Factor** the slider all the way to the left then click **OK**.



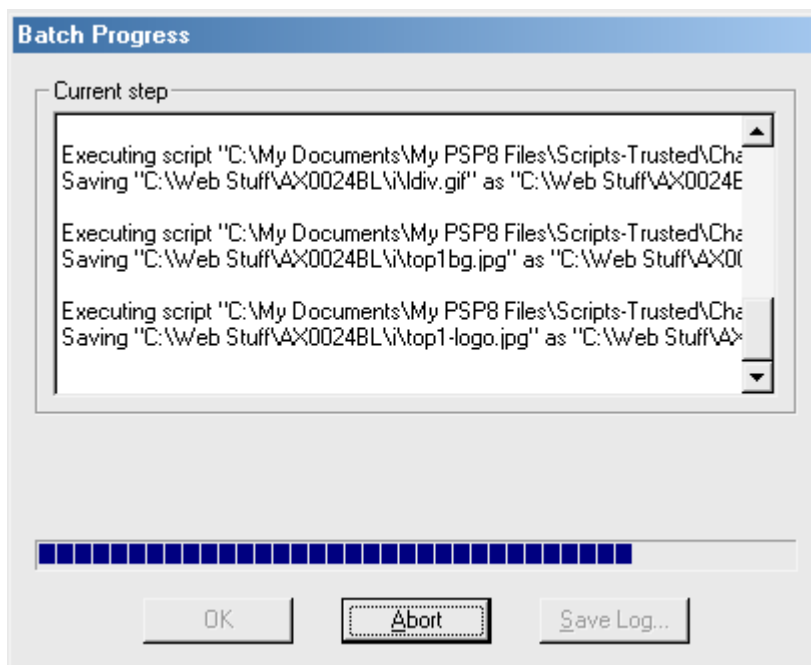
7. Click **Save**. You may be asked if you want to overwrite the existing file, in which case click **OK**.
8. Go to **File / Close** to close the image you just saved.
9. Go to **File / Script / Save Recording** to tell Paint Shop Pro to stop recording your actions. You will be presented with a Save As dialog box. Navigate to the Scripts-Trusted folder (found in the Paint Shop Pro folder), enter a name for the script (in this example we chose Change Color) and click **Save**.



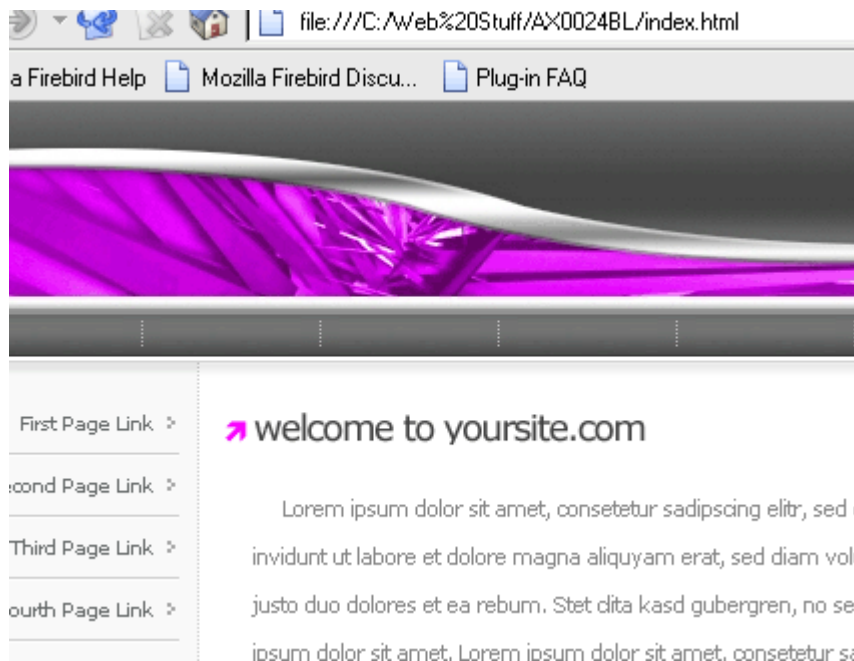
10. The script you just saved tells Paint Shop Pro to change the color of an image to pink, save the image, and then close it. You can now have Paint Shop Pro automatically repeat this entire procedure on the rest of the template's images. To do this, go to **Batch / Process**.
11. A Batch Process dialog box will appear. Navigate to the folder containing the template images and select all of the images **except** the one you originally changed. Also, exclude the file named *spacer.gif* if it exists.
12. Click **Browse** and select the script you saved earlier (in this example, *Change Color*) and click **OK**.
13. Under the Save Mode area, select the **Overwrite** radio button.
14. Click **Start**.



15. Paint Shop Pro will now run the script you just created on all of the images you selected. You will see a status dialog box like the one below.



If you view the template's HTML file in your web browser you should see the template in its new color scheme (as shown below). The script went through and automatically repeated the steps you followed earlier to change the color of the other images.



If you need more help, be sure to check out our [other guides](#), our [frequently asked questions](#), or feel free to [contact us](#).